

Daventry

28 High Street, Daventry, NN11 4HU

T: 01327 879869

Offices also located in Northampton

stonhills.co.uk



1 Brooklands Close, Daventry  
NN11 4AT

£385,000





Situated in a quiet cul-de-sac and within easy walking distance of the town centre, Stonhills are delighted to offer this detached family home, featuring four well-proportioned bedrooms (one of which is a GROUND FLOOR BEDROOM with EN-SUITE) and a generous sized rear garden.

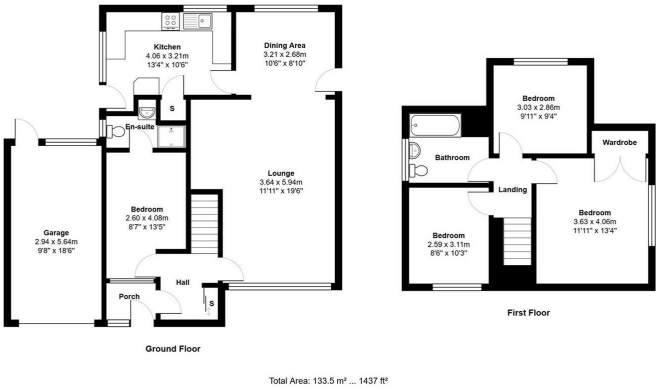
The accommodation briefly comprises of an entrance porch and hallway, a spacious open-plan lounge/diner, kitchen, a versatile ground-floor bedroom with en-suite. To the first floor there is a landing, three further bedrooms, and a family bathroom, making this an ideal home for growing families or those seeking flexible living space.

Outside there is driveway parking for several vehicles and a single garage with a courtesy door to the rear garden.

The property is OFFERED with NO UPPER CHAIN, call us now to book a viewing!!

Energy Efficiency Rating		
	Current	Potential
Very energy efficient - lower running costs		
(92 plus) A		
(81-91) B		
(69-80) C		
(55-68) D		
(39-54) E		
(21-38) F		
(1-20) G		
Not energy efficient - higher running costs		
England & Wales	EU Directive 2002/91/EC	

Environmental Impact (CO <sub>2</sub> ) Rating		
	Current	Potential
Very environmentally friendly - lower CO <sub>2</sub> emissions		
(92 plus) A		
(81-91) B		
(69-80) C		
(55-68) D		
(39-54) E		
(21-38) F		
(1-20) G		
Not environmentally friendly - higher CO <sub>2</sub> emissions		
England & Wales	EU Directive 2002/91/EC	



**Zoopla.co.uk**

**NAEA**  
ESTATE AGENTS

**Ombudsman**  
www.oea.co.uk

**rightmove.co.uk**  
The UK's number one property website

Appliances: Stonhills have not tested any equipment, fittings for services and so cannot verify they are in working order. The buyer is advised to obtain verification from their Solicitor or Surveyor. Measurements are for guidance only and are approximate. The buyer is therefore advised to check measurements if they are required for any other purpose e.g. fitted carpets, furniture, etc.